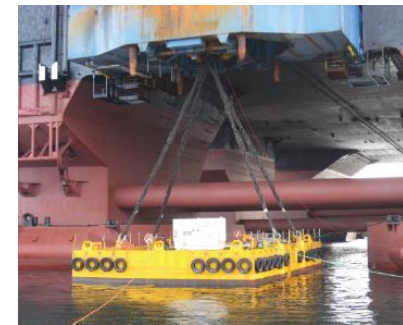


# GMC MARINE PARTNER AS USED EQUIPMENT FOR SALE

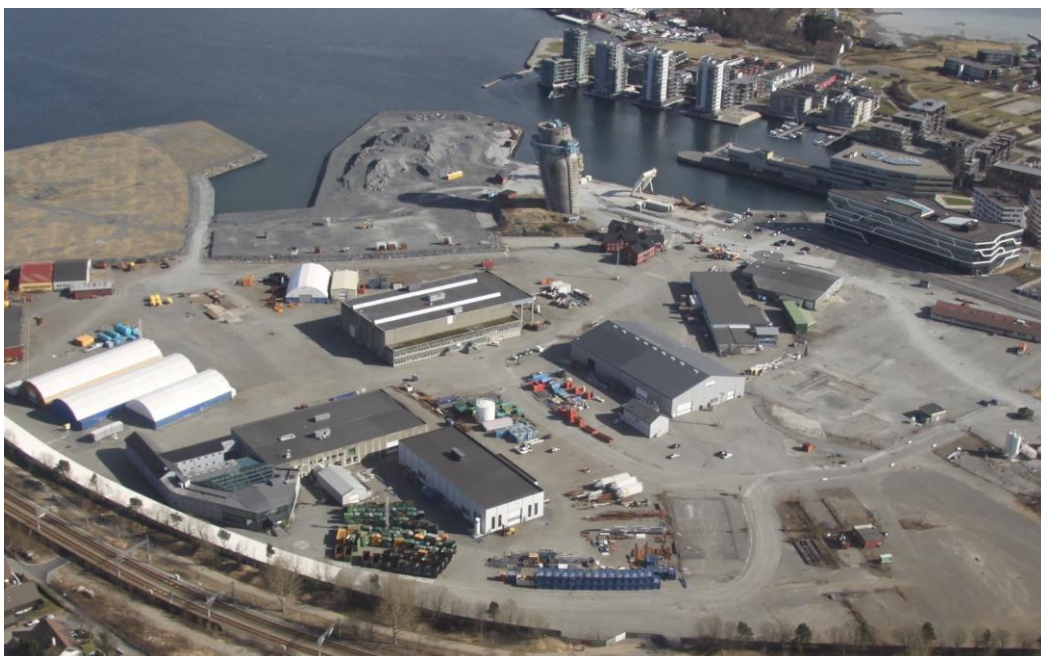


## A wide range of used equipment from our yards close to Stavanger, Norway.

The equipment shown on next pages is offered to customers for sale or rental. The catalogue presents most of our equipment, please contact us for requests of equipment other than what is presented in the catalogue.

Most of the equipment have been used in projects and are generally in good condition with certificates.

Our equipment are organized in our internal system which keep track of equipment and have all information needed of the objects including condition, certification and location. This makes us able to offer short response time and prepare the requested equipment on time according to our customers needs.



### **GMC Marine Partner AS**

#### **Product division:**

Jättåflaten 11, Jättåvågen Hinna

4020 Stavanger, Norway

Telephone: +47 51 84 80 00

24 hours tel.: +47 90067549

[sales@gmc.no](mailto:sales@gmc.no)

[www.gmc.no](http://www.gmc.no)

# Index

<i>Equipment</i>	<i>Page</i>	<i>Equipment</i>	<i>Page</i>	<i>Equipment</i>	<i>Page</i>	<i>Equipment</i>	<i>Page</i>
A-frames	4	Chain stoppers	15	Hooks	26	Turnbuckles	38
AHC frame	5	Chocks Panama	16	Lifting beams	27	Winches	39
Anchors	6	Chain Wheels	17	Load cells	28	Wire, grommets, slings	40
Barges	7	Containers	18	Masterlinks	29	Wire grippers	41
Baskets	8	Cranes	19	Pile lifting tool	30		42
Blocks & sheaves	9	Dieseltank	20	ROV shackle / hook	31		43
Bollards	10	Fairleads	21	Shackles	32		44
Brackets	11	Fenders	22	Sheaves	33-34		45
Buoys	12	Generators	23	Spooling machines Reel Drive System	35		46
Chain & kenters	13	Grappnels	24	Trailers & Transporters	36		47
Chain hoists	14	High presssure hoses	25	Triplates and Roundel plates	37		48

# A-FRAMES

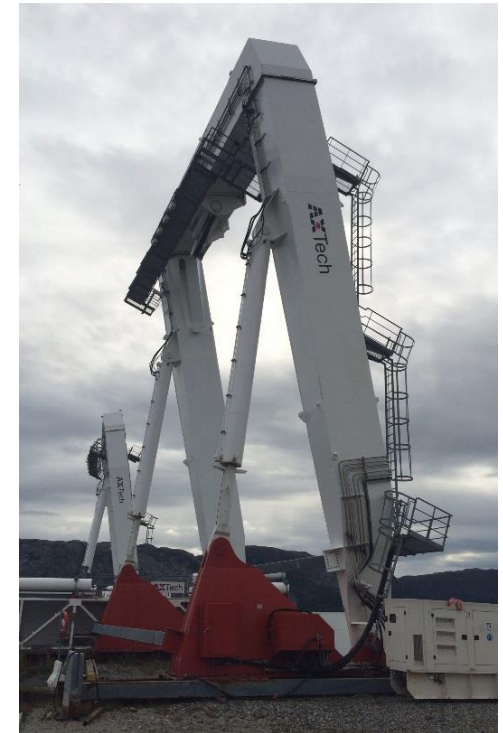
A-frames with capacity from 1 ton up to 250 ton for deck installation or temporary lifting operations.



**1, 8 and 10 Ton A-frames**



**36 Ton A-frame 7.2 x 3.85 m**



**250 Ton A-frame 19 x 15 m**

# 150 Ton capacity Passive & Active Heave Compensator for use between winch and A-frame, crane or other means



This is a tool for safe launch and recovering of subsea modules. The tool is a linear, cylinder based design, utilizing a cylinder to compensate for vertical vessel movements (heave) within specifications. The system is designed for full active heave compensation by hydraulic power from the dedicated HPU (active energy) as well as an accumulated source of energy (nitrogen gas, utilized as passive energy).

The system is designed to operate in three principal operational modes:

- Manual operation, for service purposes.
- Shock Absorber Mode
- Active Heave Compensation (AHC) Mode

Design in accordance with below rules and regulations:

“Rules for Certification of Lifting Appliances”, by DNV (1994)

“Rules for the Design of Hoisting Appliances”, Section I, Booklet 2, by F.E.M. 1.001,

3rd edition

“Surface Preparation and Protective Coating”, NORSOK M-501

“Safety related parts of control systems” NSF EN 954-1,

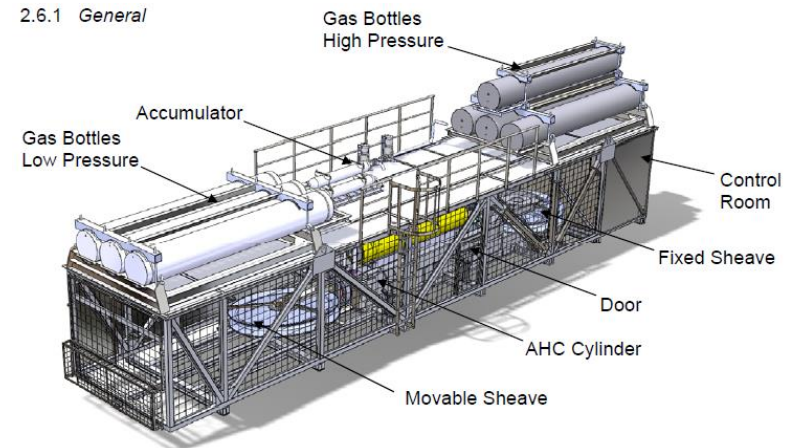
“Safety requirements for fluid power systems” NSF EN 982

Height 4.3 meter x Width 3.8 meter x Length 15 meter. Weight 65 Ton

HPU, control system, MRU and some other items are not included



2.6.1 General



# ANCHORS

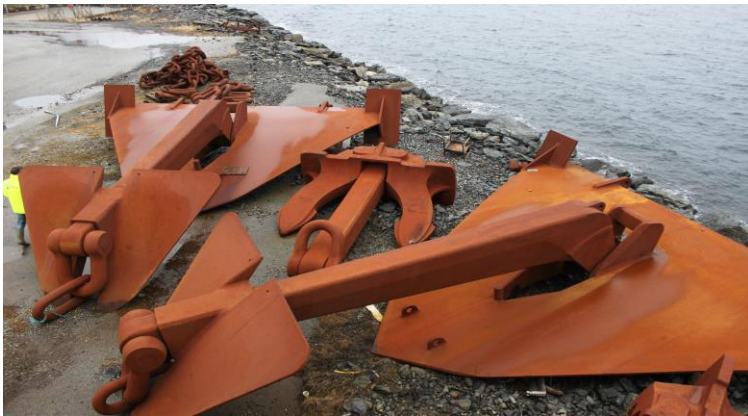
Anchors in different sizes up to 65 T with holding capacity up to 50 times own weight.



Union stockless 23 ton



Vryhof Stevpris 60 and 65 ton



One 23 ton Union and two 30 ton Kotobuki anchors



Baldt anchor 13.6 ton

# BARGES



8 pieces Heavy Duty Tension Barges = 14,5 x 20 x 3 meter. Net weight 150 Ton, Net buoyancy 770 Ton

6 pieces Heavy Duty Anchor Pontoon Barges = 12 x 12 x 2 meter. Net weight 50 Ton, Net buoyancy 210 Ton



Anchor Pontoon barge 12 x 12 x 2 meter.



Tension Barge 14,5 x 20 x 3 meter.

# BASKETS



A wide range of baskets for many purposes:

Subsea baskets - Equipment baskets - Personnel baskets - Garbage baskets



Subsea baskets 11,5 x 4,1 x 3 m (LxWxH). Payload 36 ton



Subsea baskets 3,6 x 3,7 x 3 m (LxWxH). Payload 175 ton



Garbage basket



Personnel baskets



Subsea equipment baskets



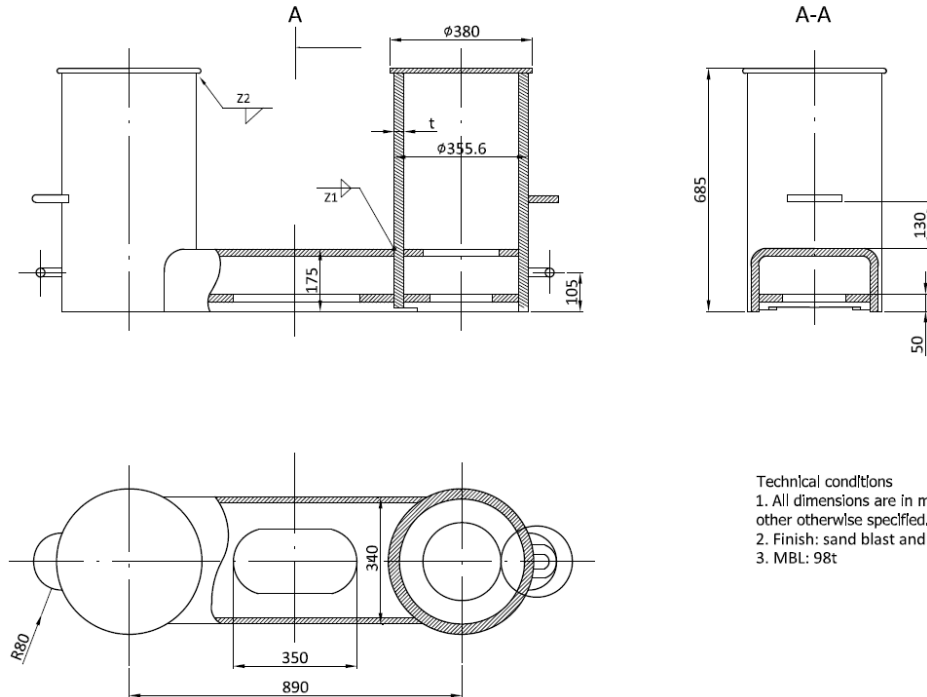
# BLOCKS

Snatch blocks, Fixed blocks, Hook blocks with capacity up to 200 ton



# BOLLARDS

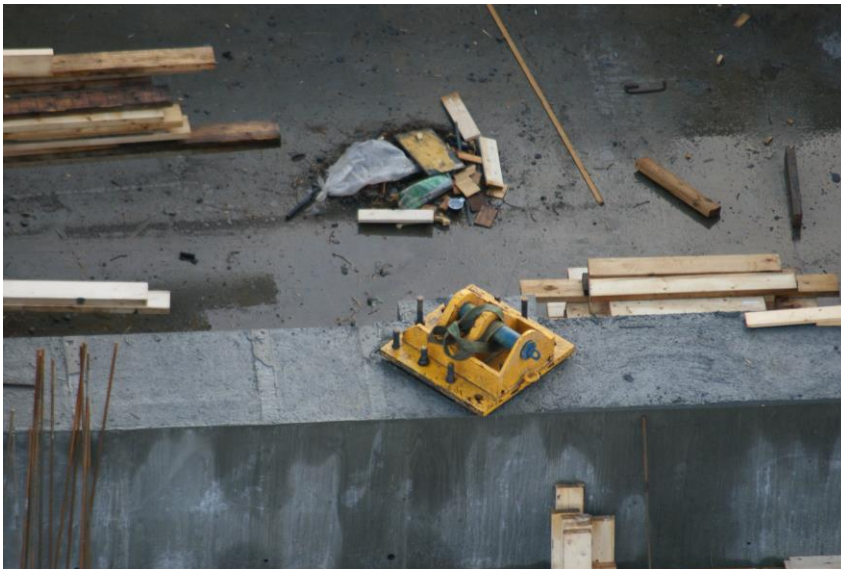
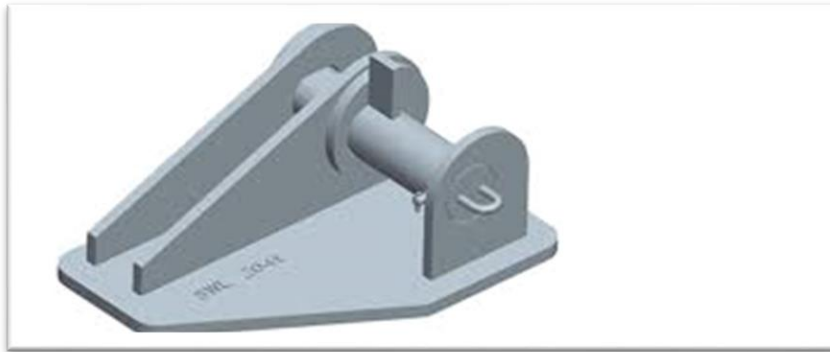
Double bollards 98 Ton MBL for deck installation.



Technical conditions  
1. All dimensions are in millimeters unless otherwise specified.  
2. Finish: sand blast and primer  
3. MBL: 98t

# BRACKETS

50 and 100 Ton towing brackets



# BUOYS

## A wide range of surface and subsea buoyancy modules:

- 13 kg to 25 kg spherical subsea buoys
- 120 and 250 kg buoyancy modules.
- 1200, 2400 and 3500 kg buoyancy modules.
- 14000 kg surface buoys

We also make special arrangements to join different buoys to get the required net buoyancy.



14000kg surface buoy



250kg modular buoys, 1500msw



1200kg modular buoys, 320msw



3500kg modular buoys, 66msw



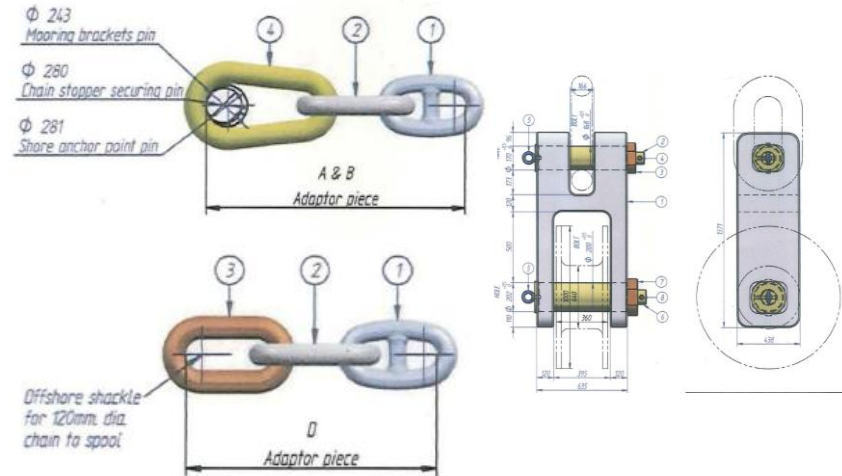
2400kg deep sea buoy, 335msw



Spherical buoys, 500 & 1000msw

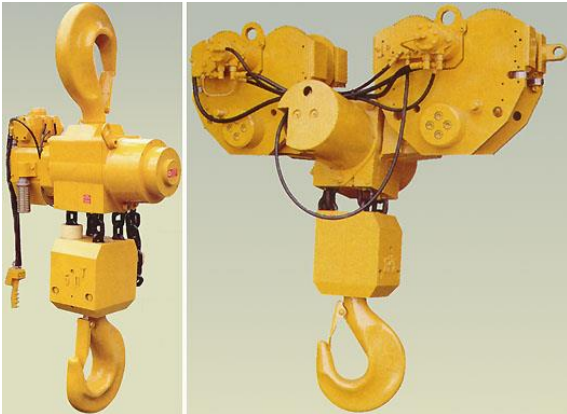
# CHAIN FOR MOORING

20.000 meter offshore quality K4 / R4 anchor chain and components, 76, 82 and 120 mm diameter.



# CHAIN HOISTS AND TROLLEYS

Air-driven, Electric and Manual hoists and trolleys, capacity 0,5 – 100 T.  
Standard and lowhead room.



# CHAIN STOPPERS

Ratchet and fixed anchor chain stoppers for 76 to 120 mm

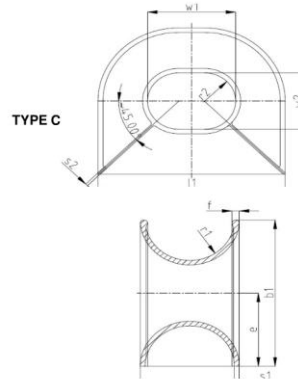


# CHOCKS

Panama chocks for deck mounting According to DIN 81915



Type	Rope Diam.	Wire working load	Wire breaking load	Weight
C2	-16 mm	20 kN	150 kN	29 kg
C3	-20 mm	30 kN	220 kN	48 kg
C5	-24 mm	50 kN	350 kN	85 kg
C8	-32 mm	80 kN	500 kN	136 kg
C12	-40 mm	120 kN	800 kN	211 kg
C20	-48 mm	200 kN	1150 kN	325 kg
C32	-48 mm	320 kN	1750 kN	840 kg



Type	E	B1	D	H1	L1	L2	R1	R2	S1	S2	W1	W2
C2	158	315		200	360		100	57.5	12	6	160	115
C3	195	390		250	450		125	70	14	7	200	140
C5	240	480		300	550		150	90	16	8	250	180
C8	293	585		360	680		180	112	18	9	320	225
C12	355	710		440	840		220	135	20	10	400	270
C20	420	840		520	1020		260	160	22	11	500	320
C32	550	1100		700	1300		350	200	35	20	600	400

C20 and C32 on stock, other types and sizes on request





# CHAIN GUIDE WHEELS FOR ANCHOR CHAIN



152 mm Chainwheel



120 mm Chainwheel

# CONTAINERS

Tool & Equipment containers - Storage containers - Office containers - Standard ISO containers and DNV 2.7-1



# CRANES FOR DECK INSTALLATION

Various cranes for installation on vessels or quay



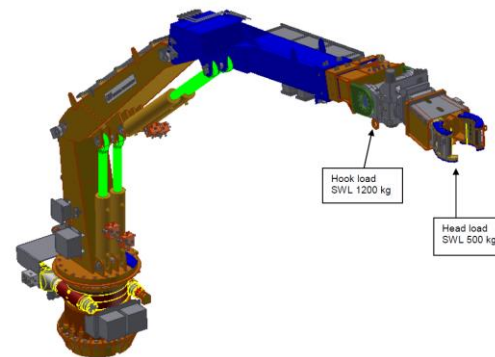
Offshore deck crane 5 T @ 20 mtrs



Folding crane 1,5 ton @ 8.2 mtrs



Folding crane 2.1 ton @ 10.87 mtrs



Folding crane with hook 1.2 ton @ 6.8 mtrs  
With pipe gripper 0.5 ton @ 7.16 mtrs

| 10.11.2022 |

[sales@gmc.no](mailto:sales@gmc.no)

# DIESEL TANK

20.000 liter diesel tank  
With electric pump and volume counter.  
Length 7.4 meter x Diameter 1.9 meter





# FENDERS & Rubber protectors



Rubber Air Fenders for several purposes with different characteristics and dimensions.

Some fenders listed below:

Yokohama type Air fenders      Length 4.0m ø2.5m, weight 1000 kg inclusive tyre net

Yokohama type Air fenders      Length 4.5m ø2.5m, weight 1200 kg inclusive tyre net

Yokohama type Air fenders      Length 5.0m ø2.9m, weight 1400kg inclusive tyre net



Fenders in use



Fenders ready for use



Yokohama fenders shipped to customer



Yokohama air fender in vertical position



Rubber protectors

# GENERATOR SETS

Diesel-driven generator sets for supply of electric power.



190 KVA generator 400 – 440 Volt 50/60 hz



200 KVA generator 380 – 480 Volt 50/60 hz



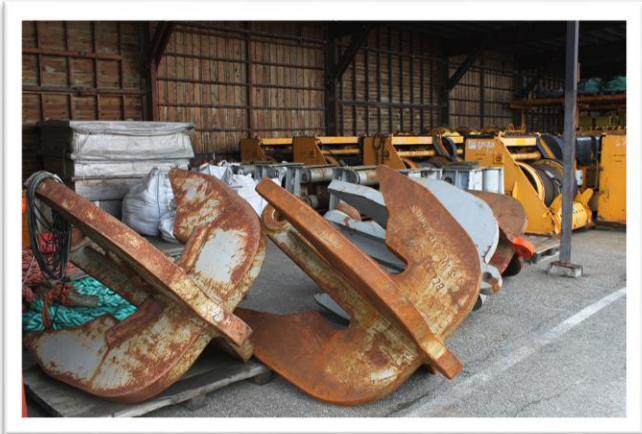
250 KVA generator 380 – 480 Volt 50/60 hz

# GRAPNELS

Grapnels for “fishing” chain, wire, cable, rope or umbilical



BEL 139 Grapnel, capacity 250 Ton, tested to 350 Ton





# HIGH PRESSURE HOSES



## 3 & 4 inch Kill & Choke hoses 10K

ONE SET CHOKE AND KILL HOSE  
LENGTH 21 METER  
31/16" 10K FLANGE, API 6A BUTT WELDED BX154  
STAINLESS STEEL 316L LINED RING GROOVE - SOUR  
ONE END  
4" FIG 1502 INTEGRAL FEMALE - SOUR OTHER END  
WITH BLACK PLASTIC SPIRAL GUARD

WORKING PRESSURE: 10000 PSI  
TEST PRESSURE: 15000 PSI  
FIRE RATED FITTED WITH BLACK PLASTIC SPIRAL  
GUARD  
DESIGN TEMPERATURE C&K: -18 TO +121 DEG.C  
DESIGN TEMPERATURE WELL TEST: -20 TO +100 DEG.C  
BRAND NAME: PHOENIX  
MANUFACTURER: CONTINENTAL  
SUPPLIED WITH:  
2 x SAFETY CLAMPS 2 x DOUBLE EYED LIFTING COLLARS  
2 x SAFETY CHAINS C/W SHACKLES EACH END  
GROSS WEIGHT: APPROX. 2500 Kg  
DIMENSIONS APPROX.: 3300 x 1500 x 3300 mm (L x W x H)



# HOOKS

Hooks with capacity 1 – 400 Ton for cranes, winches, hoists, ROV operations, etc.



# SPREADER BEAMS

GMC has different sizes of spreader beams for most lifting operations. Can come single or rigged with shackles, wires and master links. Standard capacity up to 400 T, specials up to 2000 T.



Racks with various spreader beams

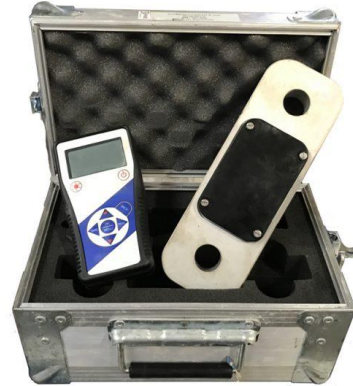


# LOAD CELLS, LOAD SHACKLES AND RUNNING LINE MONITORS

Capacity from 2 Ton up to 1250 Ton. Comes with calibration certificate.



Load shackles radio or cable controlled



Load links radio or cable controlled



Running line monitors radio or cable controlled



Subsea load shackles cable & telemetry controlled

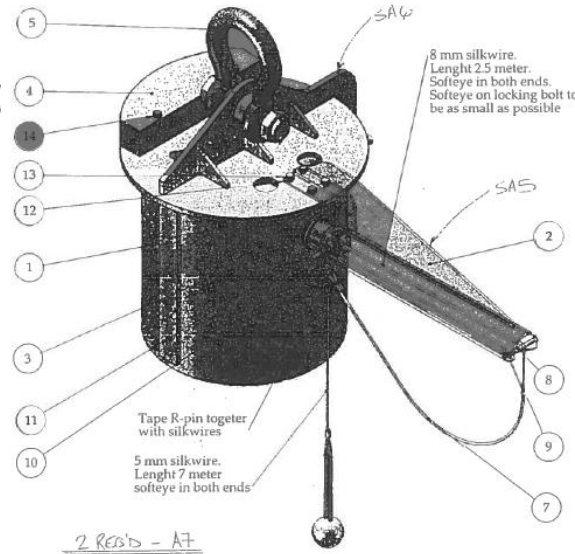
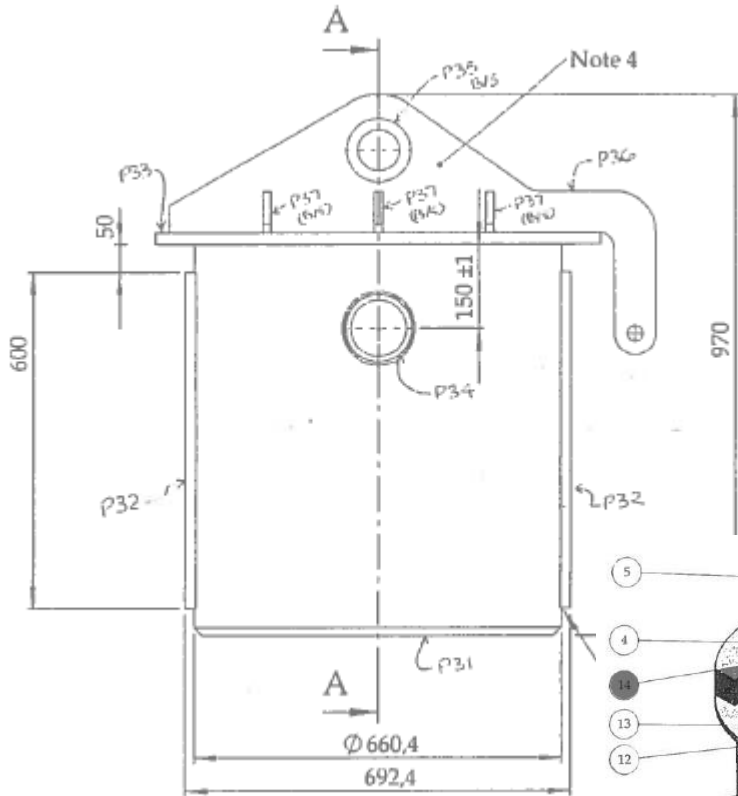
# MASTERLINKS

A wide range of Masterlinks with SWL up to 400 Ton.



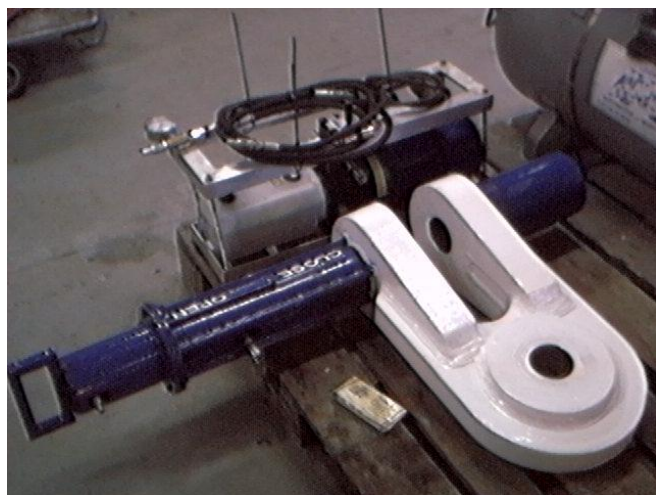
# PILE LIFTING TOOL

50 Ton capacity lifting tool for pulling of piles, with ROV operated locking.



# ROV / HYDRAULIC SHACKLES AND HOOKS

Capacity from 25 to 500 T



# SHACKLES

Standard shackles, Wide Body, Super shackles, D-type and specials with capacity up to 2000 T







# SPOOLING MACHINES



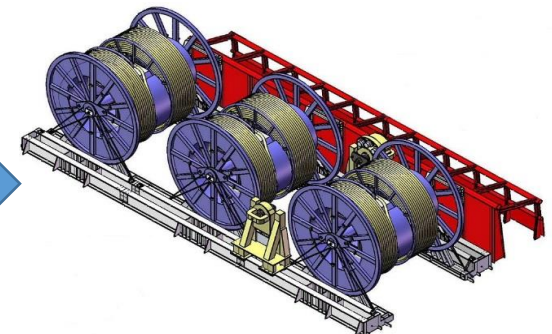
**125 Ton capacity spooling machine.**  
Max drum diameter 6m, max drum width 5 m  
5 Ton back tension. Comes with diesel or electric HPU.



**150 Ton capacity spooling machine**  
Tension readout and level wind spooling system.  
Max drum diameter 6.2m, max drum width 8m  
30T back tension. Comes with diesel HPU.



**150 Ton capacity Reel Drive System (RDS)**  
380Volt 50 hz electric drive system.  
Unlimited Drum diameter and width  
Can come with tracks for multi spooling  
5 Ton pull & 2 Ton back tension.



# TRAILERS

Transport trailers for heavy load, air-driven or manual, capacity up to 50 ton



Air-hydraulic 6 Ton transport trailer  
Padeyes for lifting empty trailer and strapping.  
Four-wheel drive and four wheel 350 deg turning.



Air 6 Ton transport trailer  
Padeyes for lifting empty trailer and strapping.  
One-wheel drive and front wheels turning

## Transporters air film

Transport air film systems for heavy load, airdriven or manual, capacity up to 50 ton



Air film transporters, capacity up to 100 ton. Can come with Easy Mover airdriven push / pull machines



Air cushion systems, capacity up to 360 ton



Transport trailers, capacity 16 ton

# TRIPLATES

Triangle plates for towing or load distribution, capacity up to 700 ton



35 and 55 Ton capacity Tri-plates



335 Ton capacity roundel plate



35 to 300 Ton capacity Tri-plates



300 Ton capacity Tri-plate with links

# TURNBUCKLES

Turnbuckles used to shorten or expand wirerope or chain assemblies



# WINCHES & EQUIPMENT



Manual, air-driven, hydraulic or electric lifting and pulling winches.

Capacity from 500 kg to 200 ton, see below a selection of our equipment.



Hose or rope storage winch



5 Ton hydraulic high speed lifting winch



5 Ton manual pulling winch with 50 Ton holding



5 Ton hydraulic Constant Tension zone 2 winch Spooling system, high speed and radio control



14 Ton electric Constant Tension zone 2 Spooling system and high speed



15 Ton electric pulling winch, 100 Ton holding

# WIRE

Wiresling, pennants, grommets and fibre rope in different sizes.



120 mm grommets



205 mm fiber rope, 44 meter length, soft eyes, MBL 1240 Ton



122 mm slings WLL 217 T



## WIRE GRIPPERS



Our gripper machines (2 off) are special designed to hold wire or sheathed spiral strand up to 167 mm diameter. The length and shape of the interchangeable inserts are calculated and designed to limit the radial pressure to 25 N/mm<sup>2</sup> (3550 psi). The inserts have a smooth surface and a large radius.

Wire or cable can be removed by the top (by opening the gripper) with easy handling, but cable socket will not be able to pass through the gripper. The machine can act as a linear winch in conjunction with deck winch.

Characteristics:

Line pull capability	100 Tons
Contact length	1500 mm
Radial pressure	25 N/mm <sup>2</sup> (at 100 tons)
Opening type	Yes
Strand diameter	Up to 167 mm
Dimensions L x W x H [mm]	2540 x 1114 x 547
Weight	3150 kg



# SUMMARY OF EQUIPMENT AVAILABLE



## Mooring equipment

Chain	Wire	Anchors	Chasers
Grappels	Barges	Gangways	Towing gear
Shackles	Wiregripper	Subsea Buoys	Buoyance modules

## Marine equipment

Fenders	Fairleads	Panama chocks	Bollards
---------	-----------	---------------	----------

## Project equipment

HPU's	Generators	Pumps	Compressors
-------	------------	-------	-------------

## Lifting equipment

Winches	Cranes	A-Frames	Spooling machines
Reel Drive System	Power Packs	Loadcells	Load Shackles
Shackles	Test weights	Waterbags	ROV shackles & hooks
ROV pumps	Masterlinks	Snatch blocks	Sheaves
Wireslings	Wiregrommets	Softslings	Personell Baskets
Equipment baskets	Subsea Baskets	Containers	Workshop containers

Please contact us for more information of our equipment on [sales@gmc.no](mailto:sales@gmc.no)

### Contact persons:

Eirik Mikalsen / +47 900 67 549 / [eirik.mikalsen@gmc.no](mailto:eirik.mikalsen@gmc.no)

Rune Christensen / +47 908 48 050 / [rc@gmc.no](mailto:rc@gmc.no)